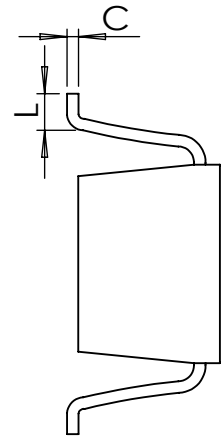
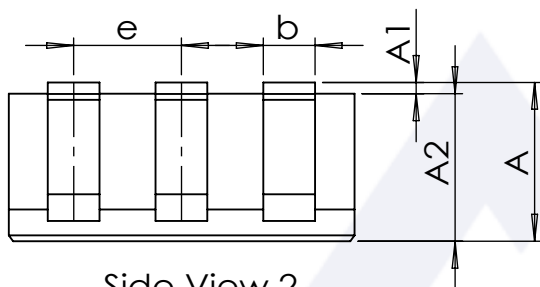


Top View



Side View 1



Side View 2

Symbol	Dimensions in mm			Dimensions in Inches		
	Min.	Typ.	Max.	Min.	Typ.	Max.
A	0.950	1.100	1.450	0.037	0.043	0.057
A1	0.000	-	0.150	0.000	-	0.006
A2	0.900	1.100	1.300	0.035	0.043	0.051
D	2.700	2.900	3.100	0.106	0.114	0.122
E	2.600	2.800	3.000	0.102	0.110	0.118
E1	1.500	1.600	1.700	0.059	0.063	0.067
c	0.080	0.150	0.250	0.003	0.006	0.010
b	0.300	0.400	0.500	0.012	0.016	0.020
e	-	0.950 BSC.	-	-	0.037 BSC.	-
e1	-	1.900 BSC.	-	-	0.075 BSC.	-
L	0.300	0.450	0.600	0.012	0.018	0.024

Package Name	Revision	First Angle Projection	Reference			
			IEC	JEDEC	JEITA	-
SOT23-6L (Type B)	Ver. R01 2024.03.12					