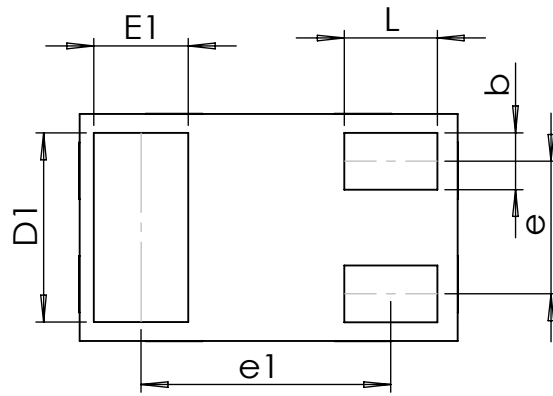
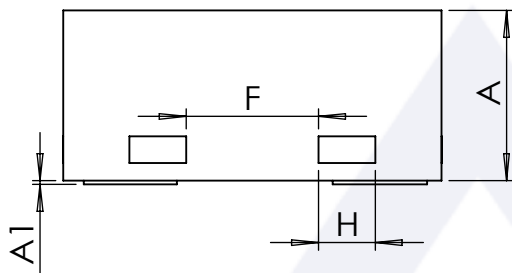


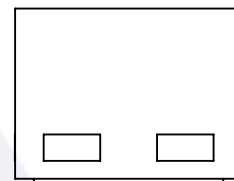
Top View



Bottom View



Side View 1



Side View 2

Symbol	Dimensions in mm			Dimensions in Inches		
	Min.	Typ.	Max.	Min.	Typ.	Max.
A	0.450	0.500	0.550	0.018	0.020	0.022
D	0.550	0.600	0.650	0.022	0.024	0.026
E	0.950	1.000	1.050	0.037	0.039	0.041
b	0.120	0.150	0.180	0.005	0.006	0.007
e	-	0.350	-	-	0.014	-
e1	-	0.650	-	-	0.026	-
E1	0.200	0.250	0.300	0.008	0.010	0.012
L	0.200	0.250	0.300	0.008	0.010	0.012
D1	0.450	0.500	0.550	0.018	0.020	0.022
H	0.080	0.100	0.120	0.003	0.004	0.005
F	-	0.250	-	-	0.010	-
A1	0.000	-	0.025	0.000	-	0.001

Package Name	Revision	First Angle Projection	Reference			
			IEC	JEDEC	JEITA	Note
DFN1006-3L (Type C)	Ver. F01 2024.01.11					SOT883