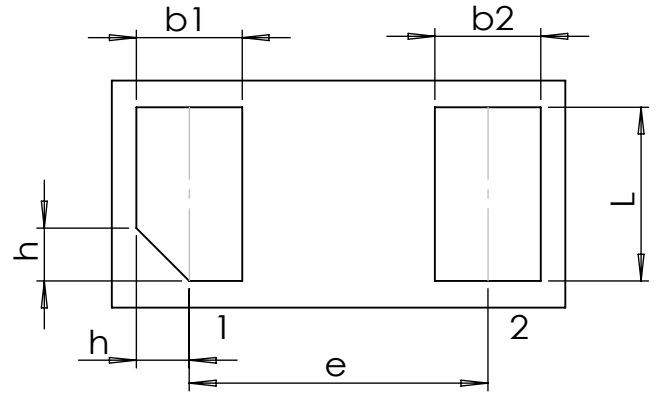
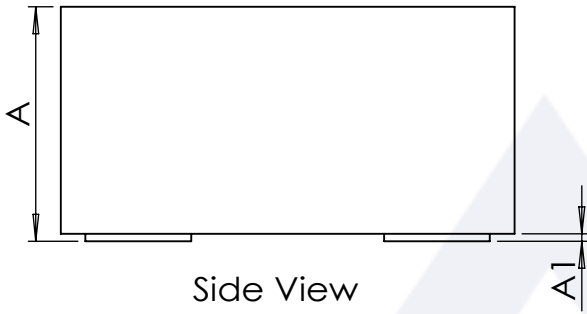


Top View



Bottom View



Side View

Symbol	Dimensions in mm			Dimensions in Inches		
	Min.	Typ.	Max.	Min.	Typ.	Max.
D	0.550	0.600	0.650	0.022	0.024	0.026
E	0.280	0.300	0.350	0.011	0.012	0.014
L	0.220	0.240	0.260	0.009	0.009	0.010
b1	0.160	0.180	0.200	0.006	0.007	0.008
b2	0.160	0.180	0.200	0.006	0.007	0.008
e	-	0.350 BSC	-	-	0.014 BSC	-
h	-	0.060 BSC	-	-	0.002 BSC	-
A	0.280	0.300	0.350	0.011	0.012	0.014
A1	0.000	-	0.060	0.000	-	0.002

Package Name	Revision	First Angle Projection	Reference			
			IEC	JEDEC	JEITA	-
DFN0603-2L (Type F)	Ver. F01 2023.09.26					